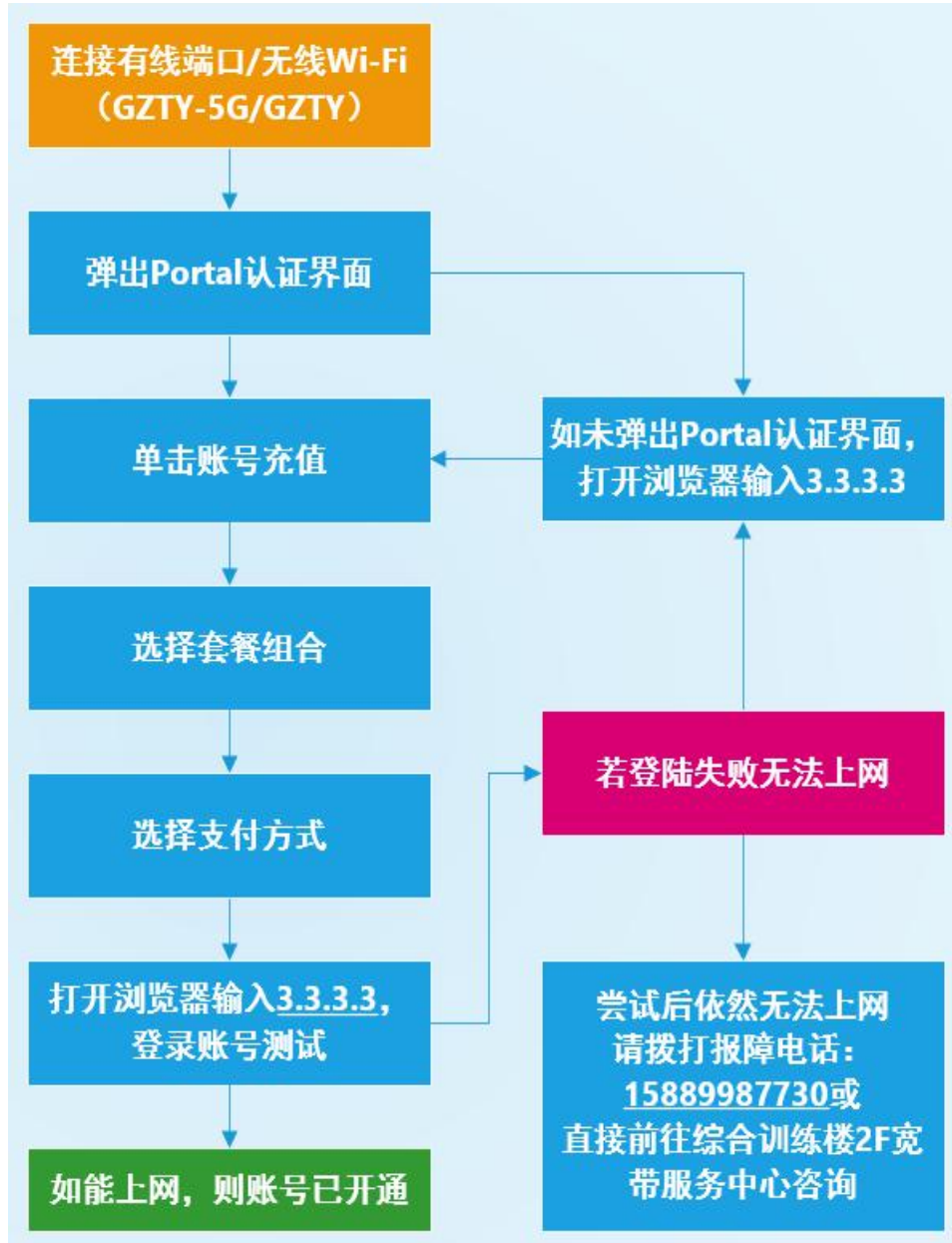


学生宽带操作流程指引

(一) 学生缴费流程指引汇总：



(二) 学生缴费流程指引详细图解:

i. 弹出 Portal 认证界面



ii. 单击账号充值



iii. 选择对应套餐



iv. 核对套餐，确定支付



v. 选择支付方式，输入验证码，确定支付

The screenshot shows the 'Mobile Payment' (移动收银台) interface. At the top, there are logos for 'China Mobile' and 'www.10086.cn'. Below is a table with order information:

订单客户	订单号	订单描述	订单类型	订单渠道	支付金额
GZTVXY-ly	0-ly-1600681096404-e0e6	20200921173816/广州体育学院/套餐A-400元50M包年/ly/400元/数量:1	广州体育学院	广州移动校园宽带	400.00元

Below the table is the 'Select Payment Method' (选择支付方式) section. It features a red box around the 'Alipay' (支付宝) and 'WeChat Pay' (微信支付) options. A red arrow points to the 'Alipay' option with the text '1、选择支付方式'. Below this, there is a 'Please enter verification code' (请输入验证码) field with a 'z_06.h' captcha image. A red arrow points to the captcha with the text '2、输入验证码，无须区分大小写'. At the bottom of this section is a blue '立即支付' (Pay Now) button, with a red arrow pointing to it and the text '3、单击“立即支付”'. At the very bottom, there is a 'Mobile Payment Usage Instructions' (移动收银台使用说明) section with a question mark icon and three numbered points.

vi. 支付宝支付界面

The screenshot shows the Alipay payment interface. At the top left is the Alipay logo and '我的收银台' (My Payment Counter). Below this is a notice: '正在使用即时到账交易 [?] 交易将在27分钟后关闭，请及时付款!' (Using real-time transaction, transaction will close after 27 minutes, please pay on time!). The payment amount '400.00 元' is displayed in orange at the top right. Below the amount is the order ID '20200921173816/广州体育学院/套餐A-400元50M包年/I...' and the merchant name '收款方: 中国移动通信集团...'. A '订单详情' (Order Details) link is on the right. The main area features a large QR code with the text '扫一扫付款 (元) 400.00' above it. To the right of the QR code is a circular icon with a QR code and the text '扫一扫' (Scan QR code). Below the QR code is a smaller QR code with the text '打开手机支付宝 扫一扫继续付款' (Open Alipay app, scan QR code to continue payment). At the bottom of the QR code area is the text '首次使用请下载手机支付宝' (Download Alipay app for first-time use). On the right side, there is a blue button with the text '< 登录账户付款' (Log in to pay with account). At the bottom of the page, there is a red text instruction: '如使用支付宝方式支付，请使用支付宝扫码。' (If using Alipay for payment, please use Alipay QR code scan).

vii. 支付宝支付成功界面



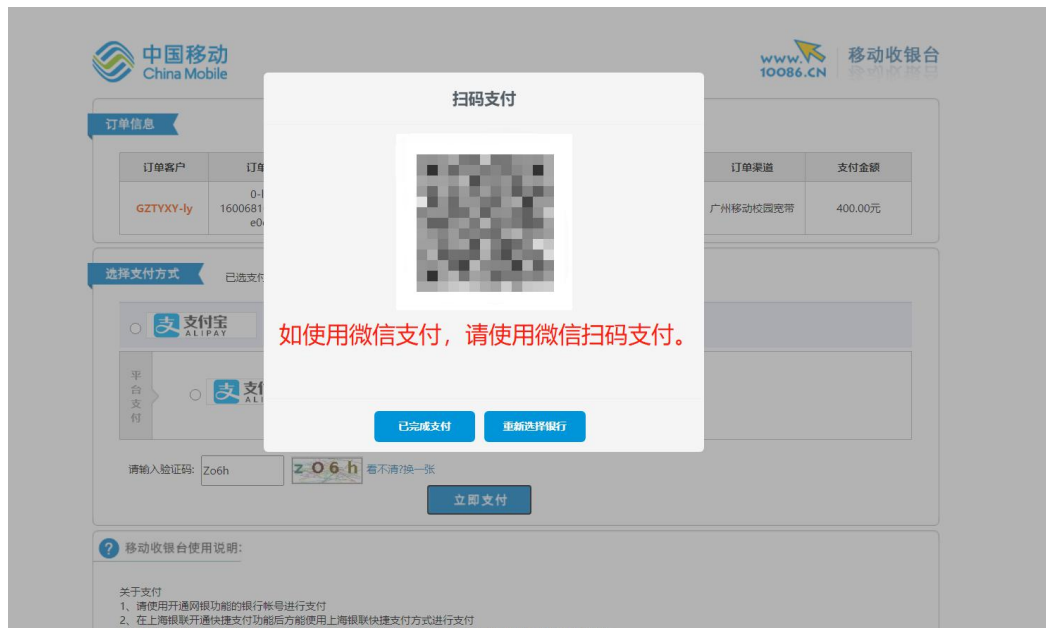
如弹出此页面，则说明支付宝支付成功。



viii. 弹出此页面说明账号已激活



ix. 微信支付界面



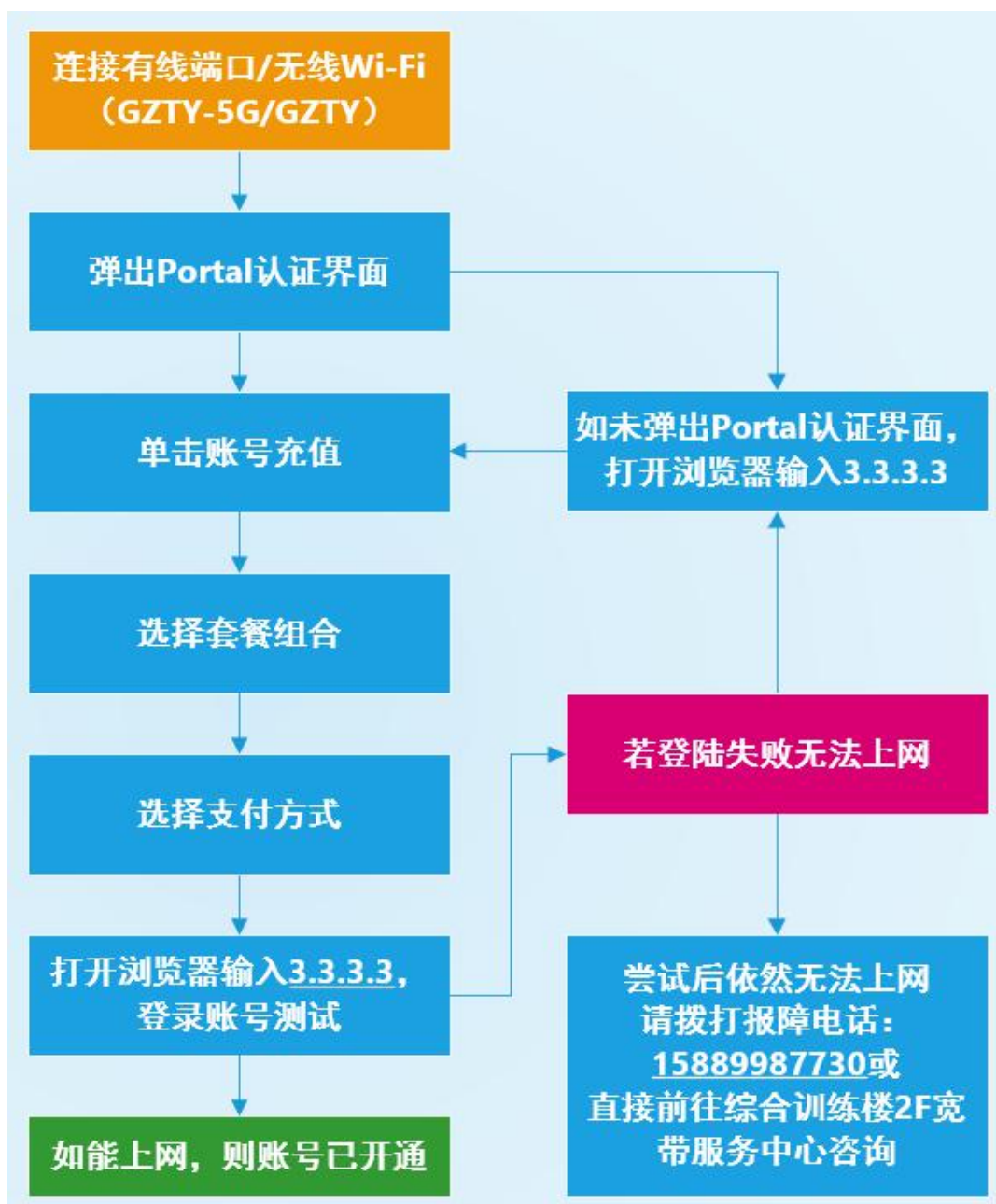
x. 微信支付支付成功界面



如弹出此页面，则说明微信支付支付成功。

xi. 打开浏览器，输入 3.3.3.3，登录账号查看是否可以正常使用

(三) 学生宽带使用指引汇总:



(四) 学生宽带使用指引详细图解;

A. 连接有线端口/无线 Wi-Fi (名称为: GZTY-5G 或 GZTY)

B. 弹出 Portal 认证界面, 若无法弹出该页面, 打开浏览器, 在浏览器地址栏输入 3.3.3.3



C. 输入账号密码



D. 单击登录，认证成功即可上网



(五) 校园宽带咨询与报障服务:

师生新开上网账号或上网遇到故障问题，可通过以下方式报障：

- (1) 线上报障：上网报障校内服务热线：15889987730。
- (2) 现场报障：综合训练馆 2 楼校园宽带服务中心现场报修。